

# CT-6 TACTICAL

## CARBON LEG TRACTION SPLINT TECHNOLOGY

The CT-6 is a Leg Traction Splint designed for Pre Hospital Care and Patient transport. It is primarily used on patients with mid-line femur fractures. The CT-6 helps relieve patient pain and prevents further damage to surrounding muscle and tissue while reducing the risk of death caused from severed arteries. The CT-6 is made of carbon tubing which snaps together via an internal bungee. Traction is achieved with a 4 to 1 pulley system using a small line to apply tension. This method results in a very precise and delicate form of traction that is also powerful enough to be effective on extra large adults. The CT-6 is extremely compact, light and strong.

### FEATURES:

- Carbon Fiber Tubing: Corrosion resistant, temperature stabile, extremely high strength to weight ratio, x- ray translucent.
- 4:1 Pulley Traction System: precise traction for adults and pediatrics. The V- Jam cleat makes it easy to readjust traction, and includes safety clip to prevent accidental releases.

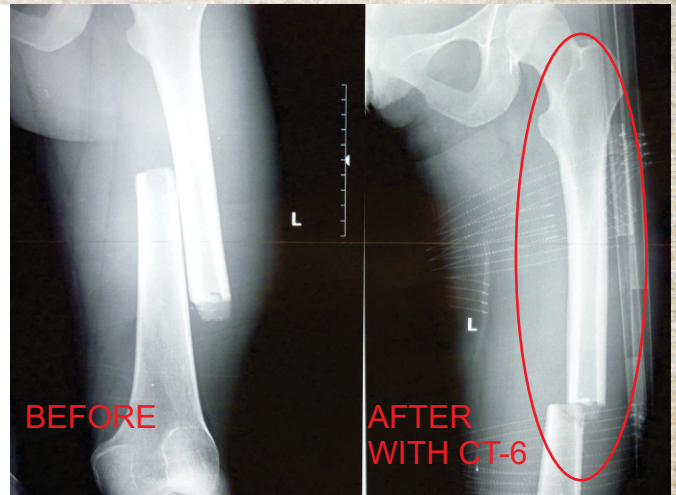


### REPLACEMENT PART No.

CT-6 Tactical	1126624
Ankle Hitch	1131020
Leg Straps	1131045
Carry Case	1131060

Instruction Manual included with each splint.

Made in USA. CE approved



### SPECIFICATIONS:

#### Size/weight:

- -3 x 4 x 12" (7.6 x 10.2 .30.5cm)
- -1 lb (500 grams)

#### Colors:

- Black Straps, Black Carbon
- Bag: Black

#### Materials:

- Carbon fiber tubing
- Nylon webbing
- Aluminum/Plastic buckles